



## Celotex RS5000

Premium Rainscreen Cladding Board  
(suitable for buildings above 18 metres in height)

**Celotex**  
SAINT-GOBAIN

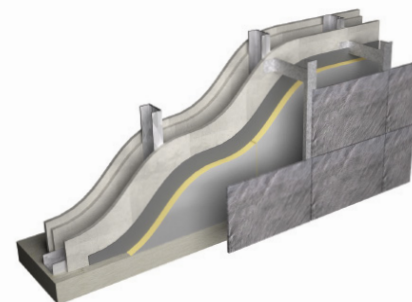
### Introduction

Celotex RS5000 is our premium performance PIR solution for use in rainscreen cladding systems. Developed specifically to enhance the thermal performance of external facade constructions, RS5000 represents an ongoing commitment to product innovation and is the first PIR insulation board to meet the performance criteria in BR 135 for insulated rainscreen cladding systems and therefore is acceptable for use in buildings above 18 metres in height.

Featuring a premium lambda performance of 0.021 W/mK and textured aluminium foil facings, Celotex RS5000 offers enhanced thermal performance, an A+ rating when compared to the BRE Green Guide and Class O fire performance.

With Celotex RS5000 you are specifying an insulation board that:

- Features a super low lambda value of 0.021W/mK offering enhanced thermal performance
- Is the first PIR insulation board to successfully test to BS 8414-2:2005, meet the criteria set out in BR 135 and therefore is acceptable for use in buildings above 18 metres in height
- Has Class O fire performance throughout the entire product in accordance with BS 476
- Achieves an A+ rating when compared to the BRE Green Guide
- Is supported by LABC approval



Celotex RS5000 in a rainscreen cladding application

### Applications

Celotex RS5000 is specifically designed for use in rainscreen cladding systems for both new build and refurbishment projects.

### Specification Clause

The rainscreen cladding insulation shall be Celotex RS5000 \_\_\_\_\_mm thick, comprising a polyisocyanurate (PIR) rigid foam insulation core featuring Celotex IQ providing super low emissivity textured aluminium foil facings on both sides and Class O fire performance throughout the product in accordance with BS 476. RS5000 has been successfully tested to BS8414-2 and meets the performance criteria of BR135. RS5000 is A+ rated when compared to the BRE Green Guide and is CFC/HCFC free with low GWP and zero ODP. RS5000 is manufactured in accordance with quality management systems ISO 9001 and environmental management system ISO 14001. All products must be installed in accordance with instructions issued by Celotex.

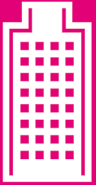
### Sustainable Insulation

Celotex PIR insulation has been independently assessed by BRE Global and has been accredited with an A+ rating when compared to the BRE Green Guide.

The results also show that Celotex offers a lower environmental impact than other typical PIR manufacturers.

For further information about Celotex' sustainable insulation solutions, visit the sustainability pages of the website at [celotex.co.uk](http://celotex.co.uk)

cont...



## Celotex RS5000

Premium Rainscreen Cladding Board  
(suitable for buildings above 18 metres in height)

**Celotex**  
SAINT-GOBAIN

### Celotex RS5000 Technical Data

Product Code	Thickness (mm)	R-value (m <sup>2</sup> K/W)	Weight (kg/m <sup>2</sup> )
RS5050	50	2.35	1.81
RS5060	60	2.85	2.16
RS5070	70	3.30	2.48
RS5075	75	3.55	2.64
RS5080	80	3.80	2.80
RS5090	90	4.25	3.12
RS5100	100	4.75	3.38
RS5120	120	5.70	4.02
RS5150	150	7.10	4.98

### Physical Properties

	Method	RS5000
Compressive strength	BS EN 826	≥120kPa
Dimensional stability	BS EN 1604	DS(TH)8
Water vapour resistance	BS EN 12086	>150 MNs/g
Thermal conductivity	BS EN 12667	0.021 W/mK
Fire propagation	BS 476: Part 6	Pass
Surface spread of flame	BS 476: Part 7	Class 1

### Typical U-values

U-values will vary depending on application. To calculate a specific U-value, please visit our online U-value calculator at [celotex.co.uk](http://celotex.co.uk)

### Installation Guidelines

Installation of Celotex RS5000 will depend on application type. For full details of the installation of Celotex RS5000, please refer to the 'applications' pages of the website at [celotex.co.uk](http://celotex.co.uk) and select the application of interest.

cont...



## Celotex RS5000

Premium Rainscreen Cladding Board  
(suitable for buildings above 18 metres in height)

**Celotex**  
SAINT-GOBAIN

### Certification

Celotex RS5000 is a premium performance solution and is the first PIR board to successfully meet the performance criteria set out in BR 135 for rainscreen cladding systems.

The system tested was as follows:

12mm Fibre Cement Panels

Supporting aluminium brackets and vertical rails

100mm Celotex RS5000

12mm Non-combustible sheathing board

100mm SFS System

2 x 12.5mm plasterboard

The fire performance and classification report issued only relates to the components detailed above. Any changes to the components listed will need to be considered by the building designer.

### Further Information

If you wish to contact Celotex, please visit [celotex.co.uk](http://celotex.co.uk) and click on the 'contact us' page.

Health & Safety information can be found by visiting the 'Resources' pages of the website at [celotex.co.uk](http://celotex.co.uk).

Celotex has a policy of continuous product development and reserves the right to alter product designs or specifications without prior notice.

**Celotex Limited**  
Lady Lane Industrial Estate,  
Hadleigh, Ipswich  
Suffolk IP7 6BA

**T: 01473 820850**  
**W: [celotex.co.uk](http://celotex.co.uk)**